

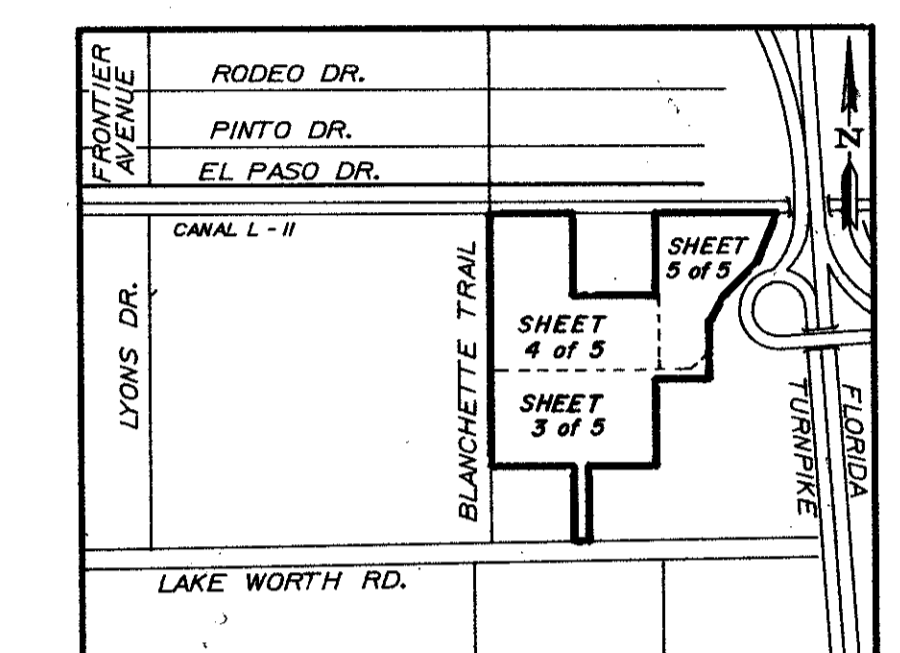
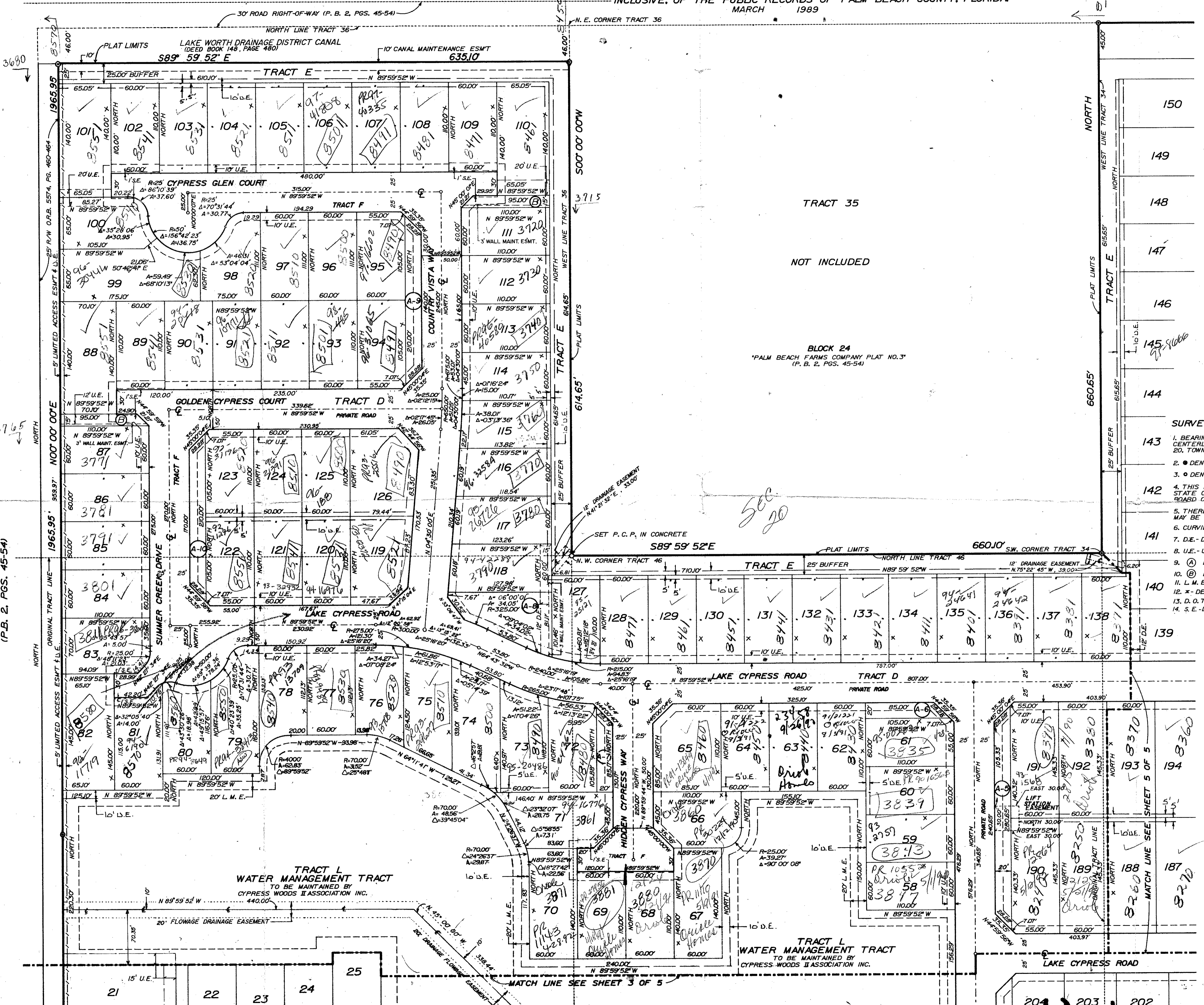
A PART OF "CYPRESS WOODS, PLANNED UNIT DEVELOPMENT"

"CYPRESS WOODS II"

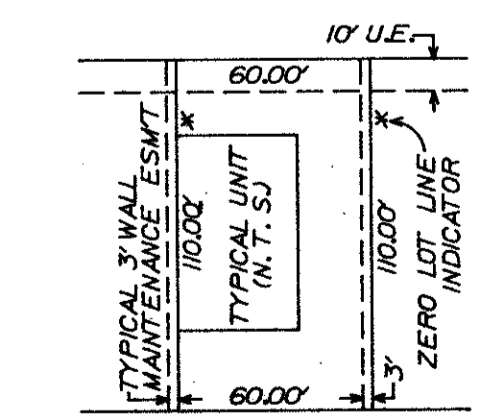
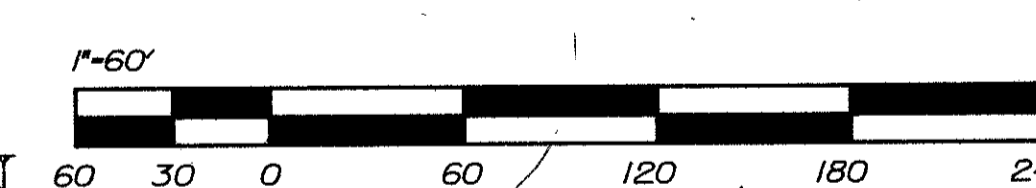
LYING IN PORTIONS OF SECTIONS 20 AND 29, TOWNSHIP 44 SOUTH, RANGE 42 EAST, BEING A REPLAT OF A PORTION OF TRACTS 33, 34, 36, 45, 46, 47, 51, 52 AND 62, BLOCK 24 OF "PALM BEACH FARMS COMPANY PLAT NO. 3", PLAT BOOK 2, PAGES 45-54, INCLUSIVE, OF THE PUBLIC RECORDS OF PALM BEACH COUNTY, FLORIDA, MARCH 1989

PALM BEACH RANCHETTES UNIT A (UNRECORDED)

STATE OF FLORIDA SS COUNTY OF PALM BEACH THIS PLAT WAS FILED FOR RECORD AT THIS DAY OF AD. 1989, AND DULY RECORDED IN PLAT BOOK ON PAGES THRU JOHN B. DUNKLE, CLERK OF THE CIRCUIT COURT II BY: D.C. SHEET 4 OF 5



- SURVEYORS NOTES: 1. BEARINGS SHOWN HEREON ARE RELATIVE TO AN ASSUMED BEARING OF NORTH... 2. DENOTES PERMANENT REFERENCE MONUMENT. 3. DENOTES PERMANENT CONTROL POINT. 4. THIS PLAT CONFORMS TO THE 'MINIMUM TECHNICAL STANDARDS FOR LAND SURVEYING IN THE STATE OF FLORIDA...' 5. THERE MAY BE ADDITIONAL RESTRICTIONS THAT ARE NOT RECORDED ON THIS PLAT THAT MAY BE FOUND IN PUBLIC RECORDS OF PALM BEACH COUNTY. 6. CURVILINEAR LOT LINES ARE NON-RADIAL UNLESS OTHERWISE NOTED. 7. D.E. - DENOTES DRAINAGE EASEMENT. 8. U.E. - UTILITY EASEMENT. 9. (A) DENOTES TRACT A, OPEN SPACE. 10. (B) DENOTES TRACT B, OPEN SPACE. 11. L.M.E. - DENOTES LAKE MAINTENANCE EASEMENT. 12. X - DENOTES ZERO LOT LINE OF INCLUDED LOT. 13. D.O.T. - DENOTES DEPARTMENT OF TRANSPORTATION. 14. S.E. - DENOTES SIDEWALK EASEMENT.



SUBDIVISION: cypress woods II PAGE 150-151 FLOOD MAP: 160-170 ZONING: RT-5 A PLAT NO: 86-98 P.L. CODE: 33-467 TAZ: 734

Alloc. #000! O'fer Akhola see last's letter 5/24/9 0515-003 62/150 CONSUL-TECH ENGINEERING, INC. CONSULTING ENGINEERS • PLANNERS • LAND SURVEYORS FOURTH FLOOR 50 EAST SAMPLE ROAD POMPANO BEACH, FLORIDA 33064

CYPRESS Woods II